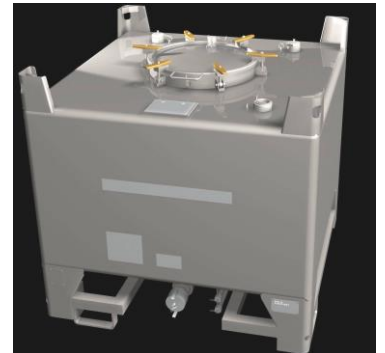


Ref code	Capacity	Base Size	Height
IM800	800Lts	1150mm x 1150mm 45¼" x 45¼"	1130mm 44½"

#### INSULATED METERCUBE IBC CONTAINER

- Long life stainless steel IBC
- Double-tank design
- Integral polyurethane insulation
- UN certified for packaging groups II & III
- Steam-heating base available
- Stack 4 high when full
- 4 way fork or pallet truck handling and top lift facility
- High quality bulk liquid industry standard fittings
- Designed to fit 20 Insulated Metercube units inside 20' ISO Container
- Tare weight: 252kgs
- 460mm manlid
- 3 off fill and test sockets



<b>Tank Shell</b>	2mm 304 grade stainless steel with F2 internal finish suitable for food stuffs or chemical use. Optional 316 available.
<b>Capacity</b>	800 Litres
<b>Base Frame</b>	304 grade stainless steel throughout – natural finish, maintenance free. Frame dimensions: Base 1150mm x 1150mm. Designed to fit 20 Insulated Metercubes inside a 20' ISO Container.
<b>Manlid</b>	Atkinson 460mm spun type complying with BS470, six-point fixing with hinge. Seal material PTFE. Other options available.
<b>Sockets</b>	3 off mounted on the tank top. 2 X 1.5" and 1 X 2.0" BSP sockets, each with female connection and bung.
<b>Safety Valve</b>	1" BSP pressure/vacuum relief valve set at 0.34 bar pressure and 1" Hg vacuum.
<b>Outlet</b>	2" nominal bore 304 stainless steel outlet pipework emanating from fully drainable dished sump with 2" lockable ball valve and PTFE seal, terminating in 2" quick-disconnect coupling with drip cap. Optional valve and connector arrangements available.
<b>Markings</b>	UN certification plate and manufacturer's plate. Unique code number.
<b>Labelling</b>	As required.
<b>Handling</b>	4 way fork truck entry and top lift facility.
<b>Stacking</b>	4 high when full.
<b>Certification</b>	UN Chapter 16 for packaging groups II and III.
<b>Periodic Test</b>	0.2 bar pressure test every 2.5 years
<b>Max Specific Gravity</b>	2.6