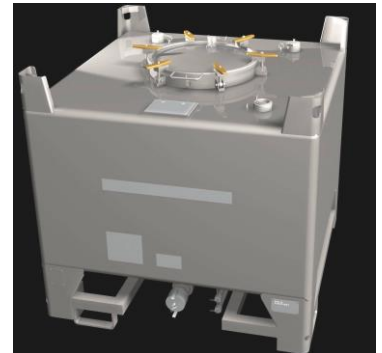


Ref code	Capacity	Base Size	Height
M1000	1000Lts	1150mm x 1150mm 45¼" x 45¼"	1130mm 44½"

METERCUBE IBC CONTAINER

- Long life stainless steel IBC
- UN certified for packaging groups II & III
- Steam-heating base available
- Stack 4 high when full
- 4 way fork or pallet truck handling and top lift facility
- High quality bulk liquid industry standard fittings
- Designed to fit 20 Metercube units inside 20' ISO Container
- Tare weight: 150kgs
- Usable payload in 20ft container: 18500kgs
- 460mm manlid
- 3 off fill and test sockets



Tank Shell	2mm 304 grade stainless steel with F2 internal finish suitable for food stuffs or chemical use. Optional 316 available.
Capacity	1000 Litres
Base Frame	304 grade stainless steel throughout including bolting – natural finish, maintenance free. Frame dimensions: Base 1150mm x 1150mm. Designed to fit 20 Metercubes inside a 20' ISO Container.
Manlid	Atkinson 460mm spun type complying with BS470, six point fixing with hinge. Seal material PTFE. Other options available.
Sockets	3 off mounted on the tank top. 2 X 1.5" and 1 X 2.0" BSP sockets, each with female connection and bung.
Safety Valve	1" BSP pressure/vacuum relief valve set at 0.34 bar pressure and 1" Hg vacuum.
Outlet	2" nominal bore 304 stainless steel outlet pipe-work emanating from fully drainable dished sump with 2" lockable ball valve and PTFE seal, terminating in 2" quick-disconnect coupling with drip cap. Optional valve and connector arrangements available.
Markings	UN certification plate and manufacturer's plate. Unique code number.
Labelling	As required.
Handling	4 way fork truck entry and top lift facility.
Stacking	4 high when full.
Certification	UN Chapter 16 for packaging groups II and III.
Periodic Test	0.2 bar pressure test every 2.5 years
Max Specific Gravity	2.6